

Enactment Valuation of Carcinoma with Segmentation Methods by Statistical Analysis

S AZARUDEEN¹, A.C DHIV²

¹M.Tech Scholar, ECE Department, IMS Engg College, UP, India.

²Assistant Professor, ECE Department, IMS Engg College, UP, India.

How to cite this paper S AZARUDEEN¹, A.C DHIV² EnactmentValuationofCarcinomawith Segmentation MethodsbyStatisticalAnalysis, IJIRE-V1I3, 29-38.

Copyright © 2020 by author(s) and
5th Dimension Research Publication
This work is licensed under the Creative Commons
Attribution International License (CC BY 4.0).
<http://creativecommons.org/licenses/by/4.0/>

Abstract: Carcinoma is the most deadly disease of which Lung cancer and Breast cancer are of high risk. This approach target at diagnosing carcinoma by considering certain techniques. In this approach, a mammogram image and microscopic Lung image are considered. These images are applied through different image segmentation techniques. Later, Binarization technique is applied to improve the contrast of the images within the affected area. Median filter is used for removing noise within the image. To the noise-free images, some of the statistical parameters are calculated. Correlation is calculated between the reference parameters and cancerous parameters. These approaches are done for the detection of cancer in statistical approach. Results are processed using MATLAB and Xilinx.

Keywords: Segmentation, Binarization, Carcinoma, Mammogram, Mean, Variance, Standard Deviation.

I. Introduction

Carcinoma is the most life threatening disease in which aberrant cells divide occupy the cells adjacent to it. As per 2018 American cancer society statistics 268,670 breast cancers are estimated, out of which expected deaths are 63,690; 234,030 Lung cancers are estimated, out of which expected deaths are 154,040 [1]. Cancers are of five types[2]. They are Carcinoma, Sarcoma, Melanoma, Lymphoma, and Leukemia, out of which Carcinoma is the most significant cause of deaths. Now-a-days the most affected Carcinoma are Lung and Breast cancer. One of powerful tool is the breast mammogram for detecting breast cancer[4]. For Lung cancer we consider Lung microscopic images[5-6]. It is estimated that 1 in 8 women have the chance of being affected with cancer. In recent year breast cancers have increased by (0.4% per year). Figure 1 clearly shows the Lung and breast cancer cases are more when compared to other cancers. By considering scanned images, it enables in analyzing the disease efficiently by considering certain image enhancements strategies[7]. To these images Statistical parameters are calculated. Based on these parameter values Cancerous and non Cancerous images can be differentiated.

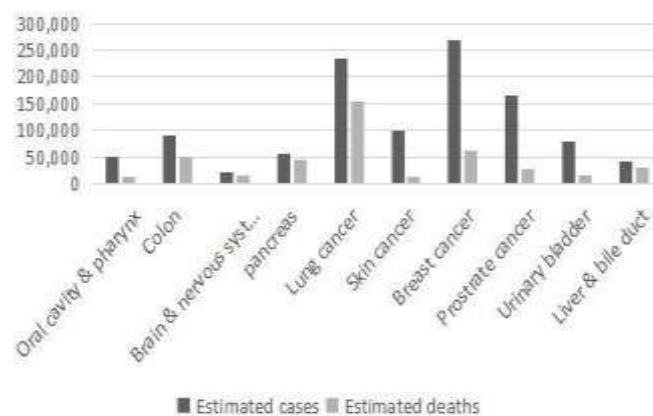


Fig 1 Statistics of different types of carcinomas

The statistics of different types of carcinomas are shown in figure 1

II. Carcinoma Detection & Implementation

The block diagram for implementing carcinoma detection in fig 2

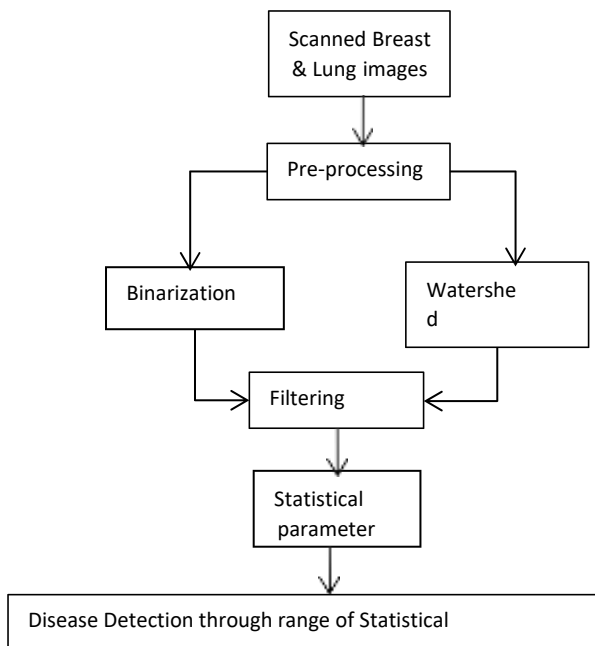


Fig. 2 Block diagram of proposed approach

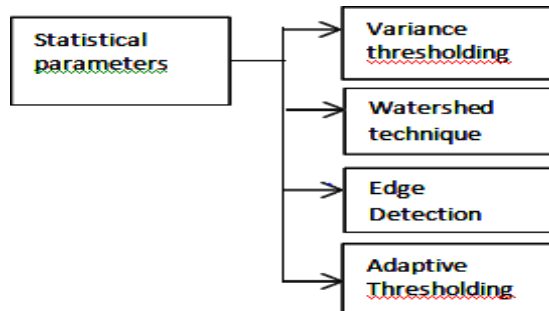


Fig 3 Block Diagram for Various Pre-processing techniques

The block diagram for representing different statistical parameters in fig 4.

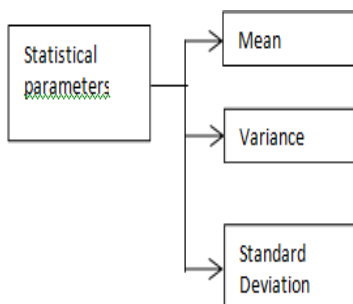


Fig 4 Block Diagram for calculating statistical parameters

Figure 2 briefly explains about the proposed approach. Figure 3 explains about various Pre-processing techniques. Figure 4 explains about the statistical parameters by which cancer can be diagnosed by the obtained statistical parameter values. In this work, Breast Mammograms and Microscopic Lung images are taken into consideration for the diagnosis of Breast cancer and Lung cancer. To these images, Pre-Processing is performed. Pre-processing step consists of Image segmentation and image Binarization. Pre-processing step is followed by a filtering process to remove noise within the images. The filter used in this process is Median filter which is used to remove the noise from the image, preserving the edges of the image. Then Average information method is performed for all the images in which Mean, Variance, Standard Deviation are calculated.

III. Image Segmentation and Image Binarization

3.1 Image Segmentation

Image Segmentation is used to locate the bounds and curves. Image segmentation can be described as a technique of allocating pixels to homogeneous and disjoint regions that form a partition in the image that share some visual traits in the breast mammogram and lung microscopic image [5-11].

3.2 Image Binarization

The fundamental precept of modifying an image into binary is to choose a threshold value, and then the pixels whose value are more than the threshold are converted to white pixels, and the pixels whose value are less than or equal to the threshold are converted to black pixels[14].

3.3.1. Statistical Parameters

Mean: It estimates the average of the gray levels in the image. Mean depends on first moments of the data. First moment is represented as in eq (1) and (2)

$$S_{\mu} = \frac{x_1s + x_2s + x_3s + \dots + x_ns}{n} \tag{1}$$

First Moment (S=1)

$$S_{\mu} = \frac{x_11 + x_21 + x_31 + \dots + x_n1}{n} \tag{2}$$

The Mathematical expression of mean is given by

$$\mu = \frac{1}{N} \times M \sum_{x=0}^M \sum_{y=0}^N P[x,y] \tag{3}$$

Variance: It explains about the distribution of gray levels over the image. It explains how far the value lies away from the mean. The second moment is given as in eq (3)

$$S_{\sigma} = \sum (x_i - \mu_x)^2 \tag{4}$$

The Mathematical expression for calculating Variance is

$$\text{Var} = \sigma^2 = \frac{1}{N-1} \sum_{i=1}^N (\bar{x}_i - x) \tag{5}$$

Standard Deviation: If the value of standard deviation is less, it means that the majority of the data is near to mean value. If it is more it means that is highly distributed over the image. The square root of the variance is given by

Correlation: Correlation is one of the statistical method that show how closely a pair of variables are related to each other. If correlation coefficient is nearer to -1 to +1 values, two Variables are related closely to each other. If r is close to 0, it means that no relation between the variables as shown in Table 4.

Algorithmic Steps For Detection Of Carcinoma

Algorithm discusses about the step-by-step approach for carcinoma detection.

Step 1: Microscopic lung images and breast images are taken as an input image.

Step 2: Pre-processing step is performed for the input images which consists of Image segmentation, Binarization.

Step 4: Implementation of statistical parameters like mean, Variance and Standard deviation.

Step 5: calculating the statistical range for each parameter.

Step 6: Based on the Mean, variance and Standard deviation values, graphs are plotted which differentiate non cancerous from the cancerous.

IV. Results and Discussion

In this paper, we consider both Breast and Lung cancerous image samples and pre-processed using MATLAB software. Statistical parameters are performed for these image samples. Statistical parameters include calculating Mean, Variance, Standard Deviation. Performing these statistical parameters on 50 samples, Cancerous and non Cancerous values can be differentiated. Range is calculated for every parameter of Cancerous image. If the value of particular image lies in that range, then it is treated as cancerous. In the same way Range is calculated for non-Cancerous images.

Pre- processing Results To Clearly Represent Cancer

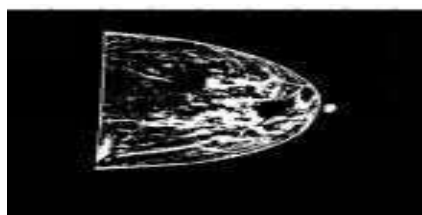


Fig. 5 Watershed gray threshold output 1



Fig. 6 Watershed gray threshold output 2

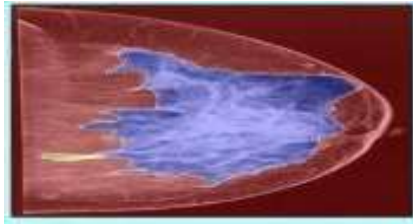


Fig. 7 Watershed Segmented output1



Fig. 8 Watershed Segmented output2

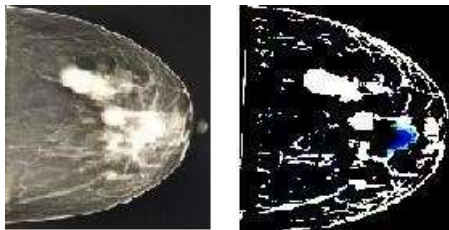


Fig. 9 Adaptive thresholded output1

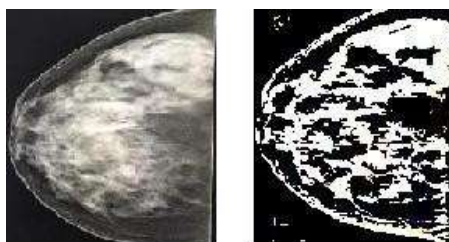


Fig. 10 Adaptive thresholded output 2



Fig. 11 Variance thresholded output1



Fig. 12 Variance thresholded output2

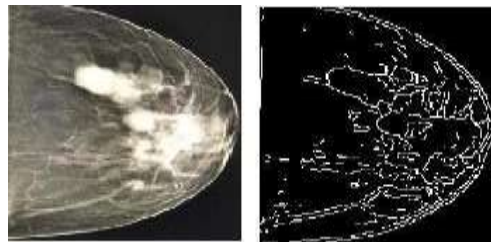


Fig. 13 Edge detection output1

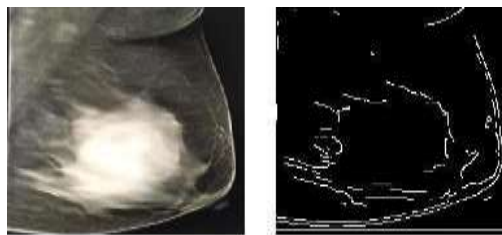


Fig. 14 Edge detection output2

1) Watershed to Binarization

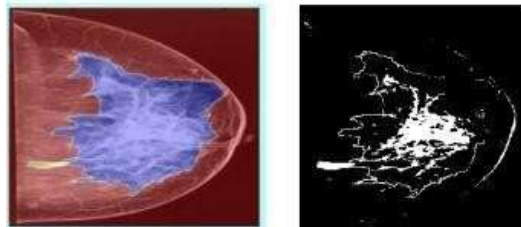


Fig. 15 Binarized output 1

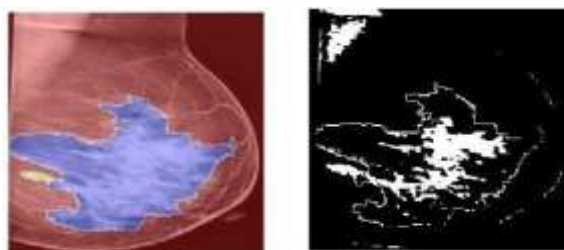


Fig. 16 Binarized output 2

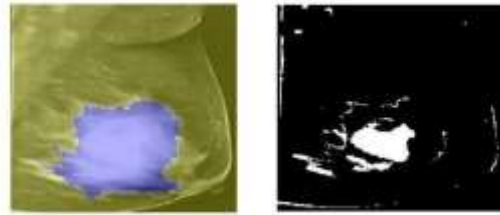


Fig. 17 Binarized output 3



Fig. 18 Binarized output 4



Fig. 19 Binarized output 5

In the Pre-processing step, Watershed technique shown in fig 5 to fig 8, Adaptive technique is shown in fig 9 and fig 10, Variance thresholding output is shown in fig 11 and fig 12, Edge detection output is shown in fig 13 and fig 14, are used to separate fore ground regions from the back ground image. Then Binarization technique shown in fig 15 to fig 19 is applied for the segmented images. Finally median filter shown in fig 20 to fig 22 is applied to the images not only for removing the noise from the images but also it provides smoothing to the images.

Median Filtering Results

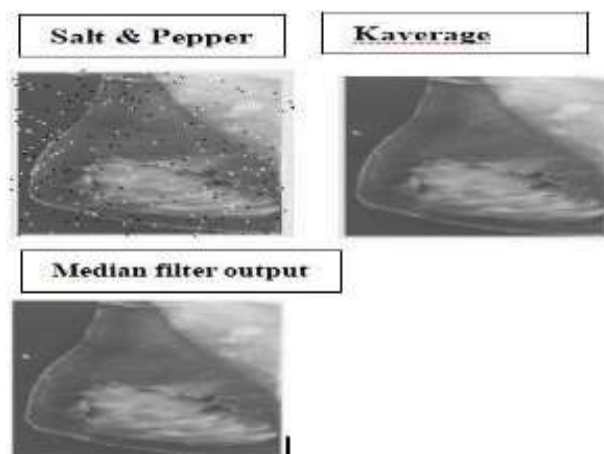


Fig. 20 Median filter output 1

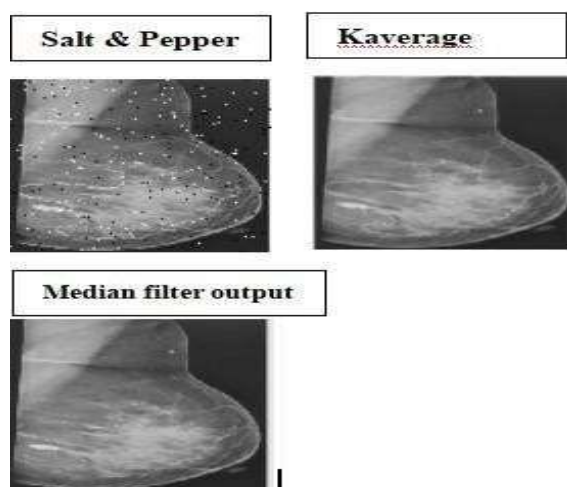


Fig. 21 Median filter output 2

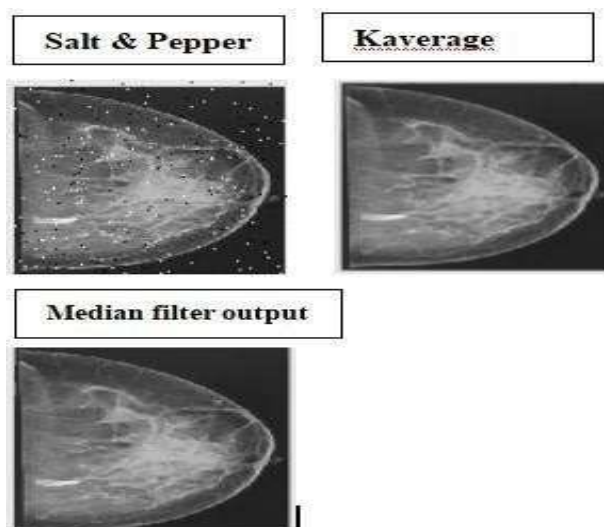


Fig. 22 Median filter output 3

Parameter evaluation for Scanned images

Now analyse the individual parameter response for both Cancerous and non Cancerous. This will help us to better realize the impact of that particular parameter on both Cancerous and non Cancerous images. Graphical analysis of sixteen samples of cancerous and eight samples of non Cancerous are shown for each parameter in fig 23 to fig 25, the values are also represented in table 1 and table 2. From the Figures below we can say that lesser the intersection of the points between the cancerous and non-cancerous images, better is the utility of the parameter for Cancer detection.

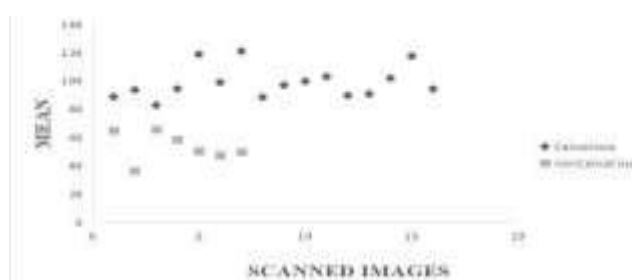


Fig. 23 Graph of Mean Vs Scanned Images



Fig. 24 Graph of Variance Vs Scanned image



Fig. 25 Graph of Standard Deviation Vs Scanned images

Table 1 Statistical parameters of non Cancerous images

Statistical parameters	Non Cancerous image 1	Non Cancerous image 2	Non Cancerous image 3	Non Cancerous image 4
Mean	36.4804	47.4771	50.384	65.0405
Standard Deviation	40.5652	42.9864	48.9387	55.7619
Variance	1.65×10^3	1.85×10^3	2.61×10^3	2.40×10^3

Table 2 Statistical parameters of Cancerous images

Statistical parameters	Cancerous image 1	Cancerous image 2	Cancerous image 3	Cancerous image 4
Mean	88.79	93.74	118.9	121.01
Standard Deviation	66.35	68.13	69.05	70.03
Variance	4.04×10^3	4.40×10^3	4.64×10^3	4.77×10^3

Table 3 Statistical parameters of Cancerous images

Statistical parameters	Maximum to Minimum range for cancerous	Average value of Range	Value of cancer image from graph	Value of cancer image from graph
Mean	82 to 123	102	120.23	58.57
Standard Deviation	60 to 71	65.5	63.22	42.98
Variance	3.18×10^3 4.89×10^3	3.4×10^3	3.56×10^3	2.48×10^3

Table 3 explains about the range of cancerous images so that one can come to a conclusion that if an image

statistical parameter value lies in the range then the image is considered as cancerous image. For non cancerous images, the range is very less because the image does not contain any lumps or any elongation. But in the cancerous image contains growth and elongation with lumps.

Table 4: Correlation between cancerous and non cancerous values.

Statistical Parameters	Correlation values	Relation
Mean	-0.4233	Cancerous and non cancerous values are different
Variance	-0.0646	Cancerous and non cancerous values are different
Standard deviation	0.1023	Cancerous and non cancerous values are different

Table 4 explains the correlation values of each statistical parameter between Cancerous and non Cancerous values. If the value is equal to +1 or -1 then both cancerous and non cancerous samples are same. If the values are near to zero, then both cancerous and non Cancerous values are different which is the desired result.

V. Conclusion and Future Scope

In the present approach, we mainly concentrated on Pre- processing step in representing the presence of cancer through segmentation techniques and Binarization technique, also applying Statistical parameters to distinguish cancerous to that of the non cancerous images using range of cancer and correlation. This approach can further be extended by calculating clump thickness, cell radius, and also calculating other statistical parameters.

References

- [1] Cancer facts & figures 2018, American cancer society, <https://www.cancer.org/>
- [2] A to Z list of Cancers, <https://www.cancer.gov/>
- [3] A. Jemal, R. Siegel, E. Ward, Y. Hao, J. Xu, and M. J. Thun, "Cancer statistics, 2009," *CA: Cancer Journal for Clinicians*, vol. 59, no. 4, pp. 225–249, 2009.
- [4] Welch, H. G., Prorok, P. C., O'Malley, A. J., & Kramer, B. S. (2016). Breast-cancer tumor size, overdiagnosis, and mammography screening effectiveness. *New England Journal of Medicine*, 375(15), 1438-1447.
- [5] Litjens, G., Sánchez, C. I., Timofeeva, N., Hermsen, M., Nagtegaal, I., Kovacs, I., ... & Van Der Laak, J. (2016). Deep learning as a tool for increased accuracy and efficiency of histopathological diagnosis. *Scientific reports*, 6, 26286.
- [6] Kumar R., Srivastava R., Srivastava S. "Detection and Classification of Cancer from Microscopic Biopsy Images Using Clinically Significant and Biologically Interpretable Features" Proc of Journal of Medical Engineering, Volume 2015 (2015), Article ID 457906, 14 pages.
- [7] Srivaramangai, R., Hiremath, P., & Patil, A. S. (2017). Preprocessing mri images of colorectal cancer. *International Journal of Computer Science Issues (IJCSI)*, 14(1), 48.
- [8] Garg, N. (2013). Binarization Techniques used for grey scale images. *International Journal of Computer Applications*, 71(1).
- [9] Bafna, Y., Verma, K., Panigrahi, L., & Sahu, S. P. (2018). Automated boundary detection of breast cancer in ultrasound images using watershed algorithm. In *Ambient communications and computer systems* (pp. 729-738). Springer, Singapore.
- [10] Hou, Z., Hu, Q., & Nowinski, W. L. (2006). On minimum variance thresholding. *Pattern Recognition Letters*, 27(14), 1732-1743.
- [11] Basim Alhadidi (2007). Mammogram BreastCancer Image Detection Using ImageProcessing Functions, *Information Technology Journal*, Vol.6, No.2, pp.217-221.
- [12] Kumar, R., Arthanari, M., & Sivakumar, M. (2011). Image segmentation using discontinuity-based approach. *Int. J. Multimedia Image Process*, 1, 72-78.
- [13] Karthika, M., & James, A. (2015). A novel approach for document image binarization using bit-plane slicing. *Procedia Technology*, 19, 758-765.